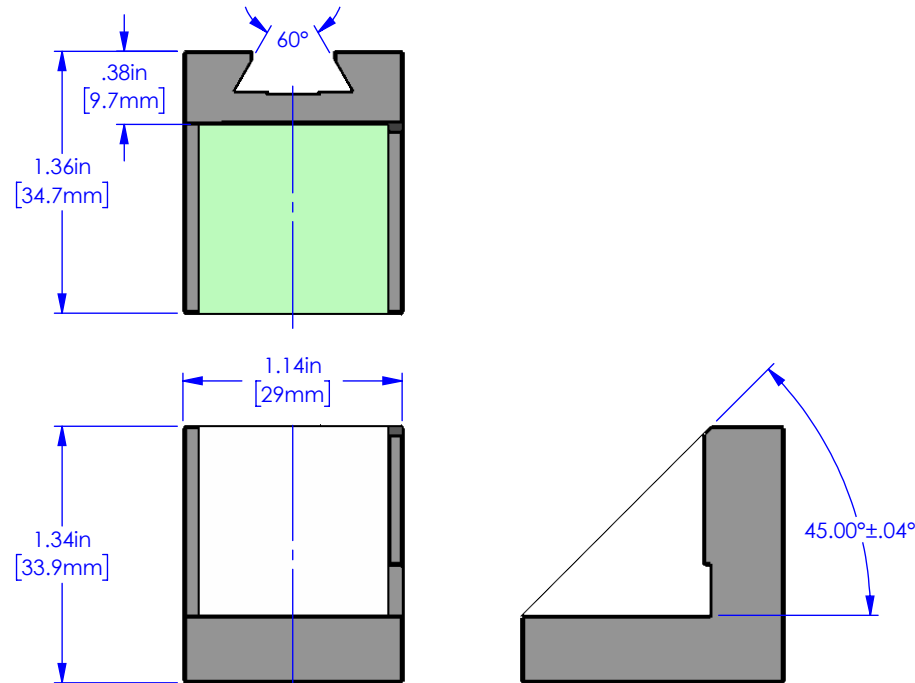
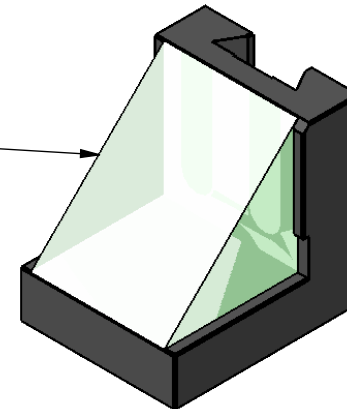


# C60-25mm-CUBE-RA-MIRROR


THIS DRAWING AND ALL DATA INCLUDED IS THE PROPERTY OF APPLIED SCIENTIFIC INSTRUMENTATION AND THE INFORMATION CONTAINED HEREIN IS FOR GENERAL PRESENTATION PURPOSES ONLY AND MAY CHANGE AT ANY TIME. CONTACT ASI OR A FACTORY REPRESENTATIVE FOR PROJECT SPECIFIC ENGINEERING.



VARIOUS MIRROR OPTIONS



PART #	DESCRIPTION
C60-25mm-CUBE-RA-MIRROR	Enhanced aluminum coating, reflectivity avg >95% 450-650nm, lambda/8 flatness
C60-25mm-RA-MIRROR-SIL	Protected silver coating, reflectivity avg >98% 500-800 nm, lambda/8 flatness
C60-25mm-RA-MIRROR-D1	Dielectric coating, reflectivity avg >98% 450-800 nm and ~99% 550-750nm, lambda/4 flatness
C60-25mm-RA-MIRROR-UV	UV enhanced mirror, reflectivity avg >90% 250-450nm, lambda/10 flatness

	<b>PROPRIETARY AND CONFIDENTIAL</b> THE INFORMATION CONTAINED IN THIS DRAWING IS THE SOLE PROPERTY OF APPLIED SCIENTIFIC INSTRUMENTATION. ANY REPRODUCTION IN PART OR AS A WHOLE WITHOUT THE WRITTEN PERMISSION OF APPLIED SCIENTIFIC INSTRUMENTATION IS PROHIBITED.	APPLIED SCIENTIFIC INSTRUMENTATION 29391 W ENID RD EUGENE, OR 97402-9533 PHONE: (541)461-8181 FAX: (541)461-4018		UNLESS OTHERWISE SPECIFIED DIMENSIONS ARE IN INCHES .xx ± .01 .xxx ± .005 .xxxx ± .0002 FRACTIONS ± 1/32 ANGLES ± 1°		DESCRIPTION 25mm RA MIRROR ON DOVETAIL HOLDER	
		DRAWN BY/DATE M.ANTHONY 5/23/23	CHECKED BY/DATE XXXXXXX	SCALE 1:1	REV -	MATERIAL -	DRAWING # C60-25mm-CUBE-RA-MIRROR ASSM

5

4

3

2

1